



### HAT #09/27

SIZE M (54-57 cm/21.3"-22.4")



**MATERIALS** Lamana Bergamo (75% Merino Superfine, 25% Baby Alpaca, approx. 65 m/25 g) 75 g in color Pine shade 34, 3.5 mm (US 4/UK 9) and 4.5 mm (US 7/UK 7) size needles, 2 spare needles (dpns) size 3.5 mm (US 4/UK 9) or 2 cable needles, 1 tapestry needle

(If hat is worked in the round, following needles are required: short (40 cm/16") circular needles in sizes 3.5 mm (US 4/UK 9) and 4.5 mm (US 7/UK 7), 1 set of dpns size 4.5 mm (US 7/UK 7), 2 spare needles (dpns) size 3.5 mm (US 4/UK 9) or 2 cable needles, 1 stitch marker, 1 tapestry needle

**ABOUT** The explanations of the abbreviations used in this pattern and the stitch symbols used in chart can be found on page 5. Chart also has written instructions which can be found on page 6

**PATTERN NOTE** Border pattern: work in 1/1 rib (k 1/p 1); in following rows (rnds) work sts as they appear  
Cable pattern: see chart or follow the written instructions on page 6; only RS rows (odd rnds) are shown, in WS rows (even rnds), work sts as they appear; 1 pattern repeat is 12 sts wide

Centered double decrease (cdd): slip 2 sts together knitwise, k 1, pass the 2 slipped sts over the worked st (= 2 sts decreased)

Gauge/Tension: 25 sts and 32 rows (rnds) using 4.5 mm (US 7/UK 7) needles in cable pattern (unstretched) = 10 × 10 cm/4" square

(Please adjust needle size if necessary to obtain correct gauge)

**HOW TO** The hat is worked flat, from the bottom up, in RS and WS rows, but can be worked in the round as well (all information about working in the round, if different, is given in brackets). CO 122 sts using 3.5 mm (US 4/UK 9) needles and work 16 rows (5 cm/2") in border pattern, beg and end with 1 selvedge st, then k 1 row (folding edge) and work another 13 rows in border pattern (in rnds: CO 120 sts, join for knitting in the round, pm to indicate beg of rnd and work in border pattern without the 2 selvedge sts).

Change to 4.5 mm (US 7/UK 7) needles, continue working according to (or follow the written instructions

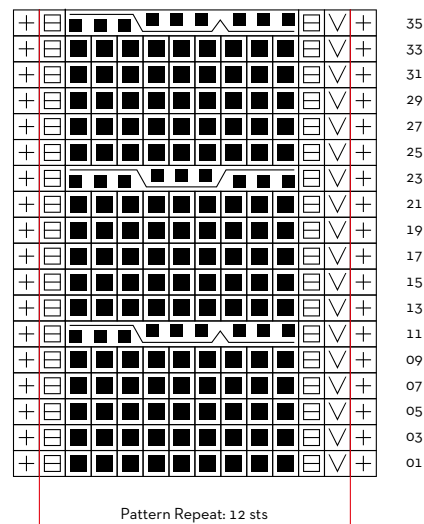
of) chart: work 1 selvedge st, work cable pattern rep (12 sts) 10 times, work 1 selvedge st (in rnds: work cable pattern rep (12 sts) 10 times, without selvedge st). After the 36<sup>th</sup> row (rnd) of cable pattern, work rows (rnds) 1-10 once more.

In next RS row (rnd) start crown shaping (for knitting in the rnd: change to dpns when rnds become too small for circular needle) by decreasing in each former cable stripe (stop working cables from now) as follows: ssk the first 2 cable sts, k to the last 2 sts of cable stripe, k2tog; rep these dec's 2 more times in following RS rows (every following 2<sup>nd</sup> rnd) [60 sts decreased; 62 (60) sts rem]. In next RS row (2<sup>nd</sup> rnd) work the rem 3 former cable sts as a cdd [= 42 (40) sts rem].

In next RS row: \*cdd, k 1, rep from \* to last 2 sts, k 1, selvedge st; 22 sts rem (in rnds: move marker at the beg of rnd 1 st to the right, then: \*cdd, k 1, rep from \* to end of rnd; 20 sts rem). Work 1 WS row (k 1 rnd). Next row (rnd): \*k2tog, rep from \* to end of row (rnd). Cut yarn, leaving a long tail, thread through rem 10 (11) sts and secure.

**TO FINISH** If hat has been knitted in rows: close seam at the back from bottom to top (close brim seam on the outside, close seam after the brim on the inside).

Weave in all yarn ends. Leave hat to dry under a damp cloth. Fold brim outwards.



# LAMANA

## INSTRUCTION

[www.lamana.de](http://www.lamana.de)





# LAMANA

## INSTRUCTION

[www.lamana.de](http://www.lamana.de)



### ABBREVIATIONS

dpn(s) = double pointed needle(s)

k = knit

p = purl

st(s) = stitch(es)

rnd(s) = round(s)

RS = right side

WS = wrong side

cdd = centered double decrease

beg = begin(ning)

pm = place marker

rep = repeat

ssk = slip 1 st knitwise, slip 1 st knitwise, move sts back onto left needle, knit together through back loops

k2tog = knit 2 sts together

dec's = decrease(s)

rem = remaining

k1b = knit 1 st one row below


cn = cable needle

### STITCH SYMBOLS

 serged stitch

 k 1

 p 1

 k 1 one row below - (k1b): k 1, but insert needle tip 1 row below, the st above dissolves



Cable over 9 sts: place 3 sts on 1<sup>st</sup> cn in front, place next 3 sts on 2<sup>nd</sup> cn in back, k 3 from left needle, then k 3 from 2<sup>nd</sup> cn, then k 3 from 1<sup>st</sup> cn



Cable over 9 sts: place 3 sts on 1<sup>st</sup> cn in front, also place 3 sts on 2<sup>nd</sup> cn in front, k 3 from left needle, place 1<sup>st</sup> cn at back of the work, then k 3 from 2<sup>nd</sup> cn, then k 3 from 1<sup>st</sup> cn

### SKILL LEVEL

Ⓐ beginner   Ⓑ intermediate   Ⓒ advanced

### WRITTEN CHART INSTRUCTIONS

#### Written instructions for working flat:

Row 1: selvedge st, \*k1b, p 1, k 9, p 1, rep from \* to last st, selvedge st

Row 2 and every following WS row: work sts as they appear

Rows 3, 5, 7 and 9: as row 1

Row 11: selvedge st, \*k1b, p 1, place 3 sts on 1<sup>st</sup> cn in front, place 3 sts on 2<sup>nd</sup> cn in back, k 3 from left needle, k 3 from 2<sup>nd</sup> cn, k 3 from 1<sup>st</sup> cn, p 1, rep from \* to last st, selvedge st

Rows 13, 15, 17, 19 and 21: as row 1

Row 23: selvedge st, \*k1b, p 1, place 3 sts on 1<sup>st</sup> cn in front, also place 3 sts on 2<sup>nd</sup> cn in front, k 3 from left needle, place 1<sup>st</sup> cn at back of the work, k 3 from 2<sup>nd</sup> cn, k 3 from 1<sup>st</sup> cn, p 1, rep from \* to last st, selvedge st

Row 25, 27, 29, 31 and 33: as row 1

Row 35: as row 11

#### Written instructions for working in the rnd:

Rnd 1: \*k1b, p 1, k 9, p 1, rep from \* to end of rnd

Rnd 2 and every following even rnd: work sts as they appear

Rnds 3, 5, 7 and 9: as rnd 1

Rnd 11: \*k1b, p 1, place 3 sts on 1<sup>st</sup> cn in front, place 3 sts on 2<sup>nd</sup> cn in back, k 3 from left needle, k 3 from 2<sup>nd</sup> cn, k 3 from 1<sup>st</sup> cn, p 1, rep from \* to end of rnd

Rnds 13, 15, 17, 19 and 21: as rnd 1

Rnd 23: \* k1b, p 1, place 3 sts on 1<sup>st</sup> cn in front, also place 3 sts on 2<sup>nd</sup> cn in front, k 3 from left needle, place 1<sup>st</sup> cn at back of the work, k 3 from 2<sup>nd</sup> cn, k 3 from 1<sup>st</sup> cn, p 1, rep from \* to end of rnd

Rnds 25, 27, 29, 31 and 33: as rnd 1

Rnd 35: as rnd 11