



PULLOVER #07/13

SIZE M

ⓑ

MATERIALS Lamana Premia (60% Super Kid Mohair, 40% Silk, approx. 300 m/25 g) 175 g in color Pigeon Blue shade 36, 3.5 mm knitting needles (UK 9/US 4), circular knitting needle of same size, stitch holders, tapestry needle

MUSTER Main pattern: stocking st: k RS rows, p WS rows; in rounds: k all rounds
Border pattern: see chart: RS rows *and* WS rows are shown; 1 pattern repeat = 23 sts
Tension/gauge: 22 sts and 32 rows in st st using yarn held doubled = 10 × 10 cm

BACK AND FRONT For back CO 121 sts using yarn held doubled and k 1 row (WS). Continue as follows (RS): work 3 sts in st st, work border pattern repeat 5 times, work 3 sts in st st. Work as given for 24 rows (2 pattern repeats in height), then continue in st st. When work measures 34 cm from beg start armhole shaping and BO 6 sts each side, then decrease as follows starting from next RS row: k 2, skpo, k to last 4 sts, k2tog, k 2. Rep these decs in next 3 RS rows, then twice in every 2nd RS row (97 sts rem).
When work measures 52 cm from beg shape neckline as follows: leave centre 47 sts on holder and continue each part (25 sts) separately. Start with shoulder part after neckline sts, and in next 6 RS rows work as follows: k 2, skpo, work to end of row. After last dec work 1 WS row, then leave rem 19 sts on holder. Finish second shoulder in opposite direction: k to 4 sts before neckline, k2tog, k 2; rep these decs in next 5 RS rows and, after last WS row, leave rem 19 sts on holder.
Work front as given for back.

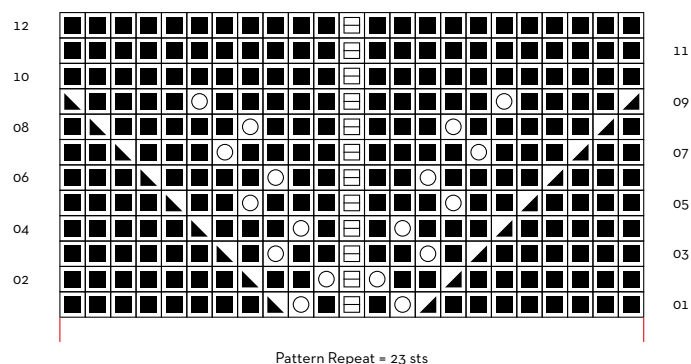
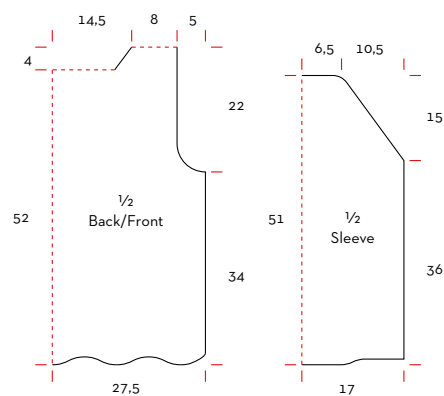
SLEEVES CO 75 sts using yarn held doubled and k 1 row (WS). In next RS row continue as follows: work 26 sts in st st, work border pattern repeat once, end with 26 sts in st st. Work as given for 24 rows, then continue in st st. When work measures 36 cm from beg decrease as follows starting from next RS row: k 2, skpo, k to last 4 sts, k2tog, k 2. Rep these decs next 22 RS rows (29 sts rem). BO 5 sts at beg of next 4 rows, then BO last 9 sts. Work second sleeve the same.

TO FINISH Connect shoulder seams using 3-needle bind off.

Slip living sts of front and back on circular needle, between these parts pick up and knit approx. 25 sts along each side of neckline, close round and work 10 cm in st st, then BO loosely.

Join sleeve seams starting from cuff to last 2 cm. Pin centre st of sleeve cap on shoulder seam and sew in sleeve from top to bottom, sew last 2 cm of sleeve seams tog with 6 BO armhole sts. Close side seams, weave in ends.

Cover with a damp towel and leave until dry.



LAMANA INSTRUCTION

www.lamana.de



LAMANA INSTRUCTION

www.lamana.de



ABBREVIATIONS

k = knit

p = purl

st(s) = stitches

st st = stocking st: k RS rows, p WS rows

RS = right side

WS = wrong side

CO = cast on

BO = bind off

beg = beginning

skpo = slip 1 st knitwise, k 1, then pass slipped st over (= 1 st decreased)

k2tog = knit 2 sts together (= 1 st decreased)

p2tog = purl 2 sts together (= 1 st decreased)

tbl = through back loop

rep = repeat

dec(s) = decrease(s)

rem = remaining

yo = yarn over

SKILL LEVEL

Ⓐ easy Ⓑ intermediate Ⓒ advanced

LEGEND

KNITTING SYMBOLS

◻ yo

■ k 1 (RS), p 1 (WS)

▣ p 1 (RS), k 1 (WS)

▤ k2tog (RS), p2tog (WS)

▥ skpo (RS), p2tog tbl (WS)